

Gallery 1 - Ground Floor

FLOOR AREA

GALLERY FRONT - 58.9 sqm - 634 sqf

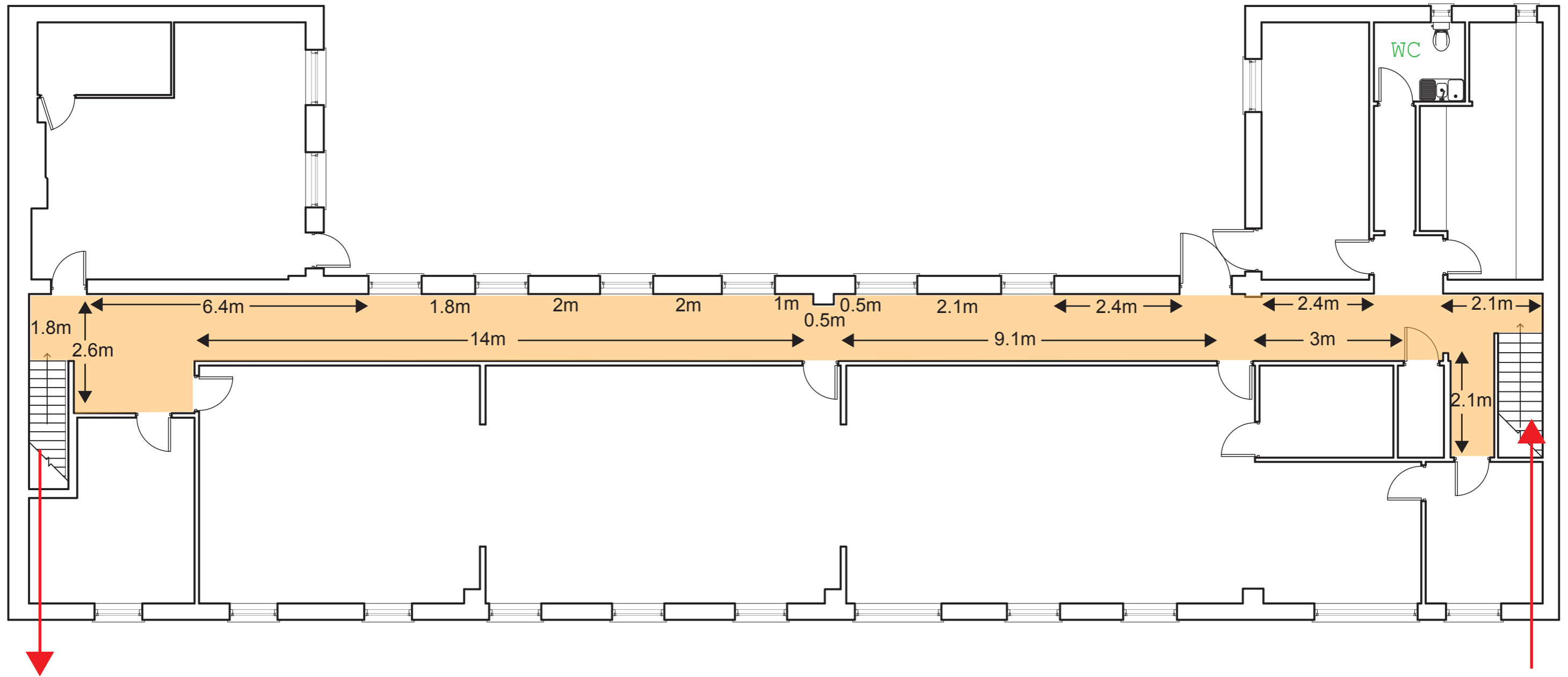
GALLERY REAR - 30.9 sqm - 332.6 sqf

WALL AREA

GALLERY FRONT - 101.4 sqm - 1091.5 sqf

GALLERY REAR - 73 sqm - 785.8 sqf

Ceiling height shown in



Gallery 2 - Landing Gallery, first floor

FLOOR AREA

GALLERY 2 - 56.4 sqm - 607.1 sqf

Landing end to end 27.9 metres

WALL AREA

GALLERY 2 - 190 sqm - 2045 sqf

Ceiling height 3.2m