



Making a proposal

At ESPS we encourage artists and curators to think of the galleries as a blank canvas. We encourage experimentation and we try not to impose, within reason, any restrictions on how the space is used.

We provide opportunities for artists at any stage in their careers to curate a show with friends or colleagues, opportunities that for various reasons may not to be available in publicly-funded or commercial gallery. We have a lot of space and in the past have accommodated over 65 artists in a single show spread over both galleries.

We are funded entirely through gallery hires (with no commission on sales) and we tend to present group exhibitions and events, though of course we are happy to consider proposals for solo exhibitions.

We have no restrictions on what we show. Two and three dimensional art, moving image, performance, spoken word,

You can contact us at: info@electrostudiosprojectspace.co.uk or messages can be left on our instagram account: [@electro_studios_project_space_](https://www.instagram.com/electro_studios_project_space_)

Who we are

Electro Studios Project Space (ESPS) is a public-facing, independent, artist-led organisation. We have been in our current building for more than 25 years.

We have two galleries and in the region of 14 artists' studios and are housed in a Victorian, light-industrial building overlooking the Old Bathing Pool site in West St. Leonards. Directly opposite is a cycle path which connects us to Hastings Contemporary to the East and Bexhill's De La Warr Pavilion to the West. Just beyond the cycle path is the all-embracing sea.

Our main gallery on the ground floor faces seaward and opens directly onto the street. @landing_esps is on the first floor, at the rear of the building. The walls of both galleries are white-painted, plasterboard and have excellent natural light, ample spotlights and plenty of power points at floor level.

At the front of the main gallery is a wooden double-door allowing access for large works. It's old and not air-tight and we recommend artists consider the nature of work being shown and duration of the exhibition at inclement times of year. The floors throughout are rough and uneven consisting in places of cement, tile and wood.

Anyone who is familiar with the galleries consider the building's industrial past and it's all too visible imperfections to be a virtue. We have no aspirations to be a 'white cube' and hope artists who support us will view this as a positive.

Opening times

We normally recommend opening exhibitions to the public on Saturdays and Sundays from around 12noon - 5pm (with an opening on the Friday night) These hours can be extended in any way. Artists are responsible for their own invigilation

Costs

Ground floor gallery £300 - per week

Landing gallery £200 - per week

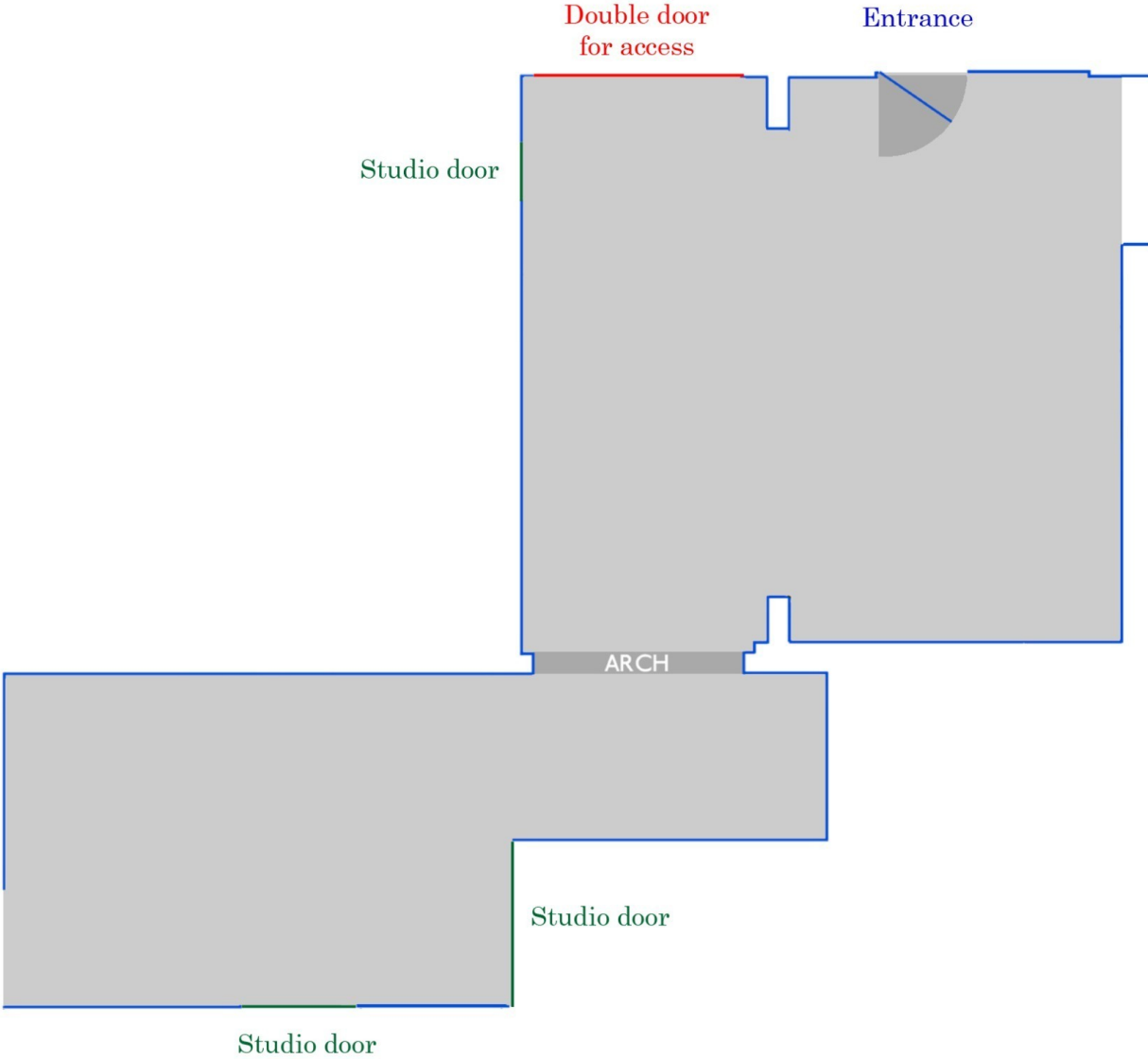
* Charges remain at the discretion of ESPS. Electricity may be an additional charge if heating is required.

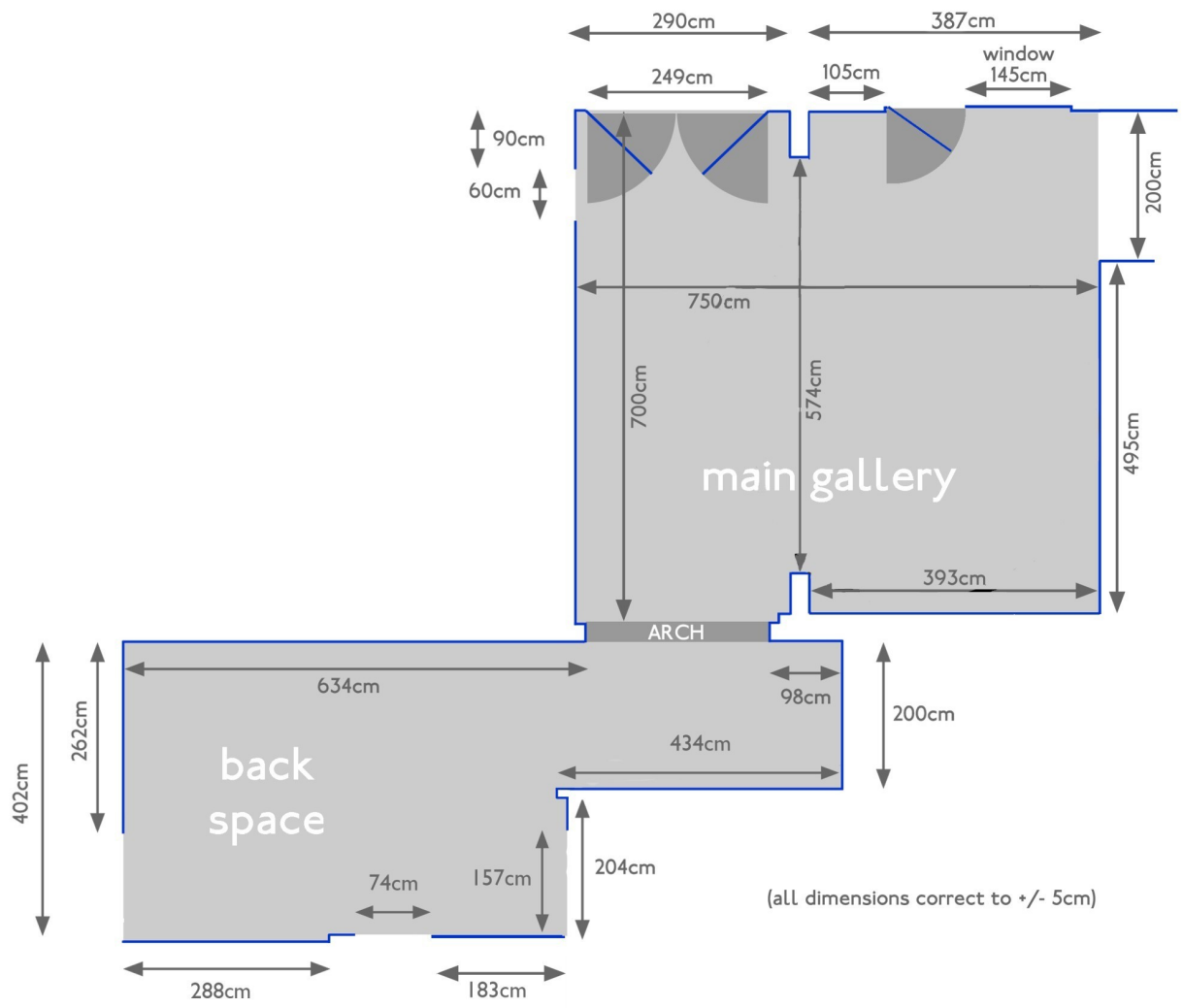
Marketing and promotion

We post information on our website and e-invites for each show will be sent to our mailing list and posted on Instagram and Facebook. Appropriate updates will also be posted. We also send invitations to the local free press, who regularly cover our events.

Please use the ESPS logo on all marketing and advertising materials and wherever possible encourage artists to follow us on @electro_studios_project_space_

Gallery plans.





(all dimensions correct to +/- 5cm)